



Follow us at  
"ThermTec Outdoor"



# ThermTec

ThermTec Technology Co., Ltd.  
Email: [info@thermteytec.com](mailto:info@thermteytec.com)  
Website: <https://www.thermteytec.com>



Featuring remarkable 15mK sensitivity, a fully integrated laser rangefinder, and AI-driven Thermal Super Resolution, the Cyclops 3.0 offers enhanced detection performance, superior image processing, and an ergonomic design for demanding outdoor explorations.

## Taking You to Explore the Nature

-  1600 × 1200 0.5" AMOLED Display
-  ThermTec AI Calibration
-  Enhanced Digital Zoom
-  1800m Long Detection Range
-  Compact & Lightweight Design
-  7Hx2 Durable Operation
-  Service & Support All-in-one App

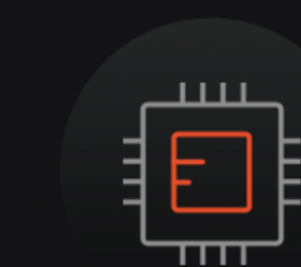
New Value Resolution

# ThermTec

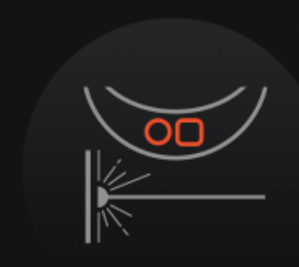


## Cyclops 3.0

Thermal Imaging Monocular



NETD < 15mK  
Precision



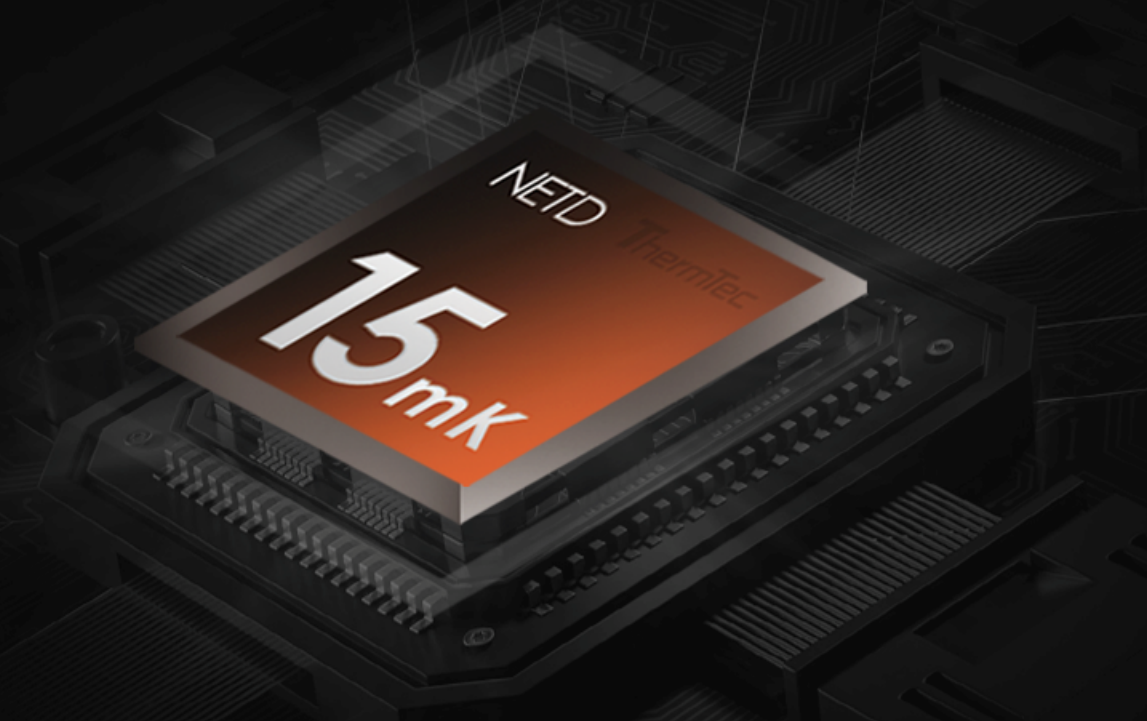
LRF Integrated  
Design



Thermal  
Super Resolution

## 15mK Superior Clarity

With NETD<15mK, a larger aperture, and a 50Hz fresh rate, it maximizes light intake, and delivers exceptional visual precision and coherence for superior imaging performance.



## Consistently Clear & Stable Image

ThermTec AI Calibration reduces shutter frequency, minimizes image freezing, and ensures stable and consistent images over changing environments.



## Replaceable & Rechargeable Batteries

Two rechargeable 18650 batteries with 7 hours of life each ensure long-lasting energy efficiency, keeping you powered in various outdoor conditions.

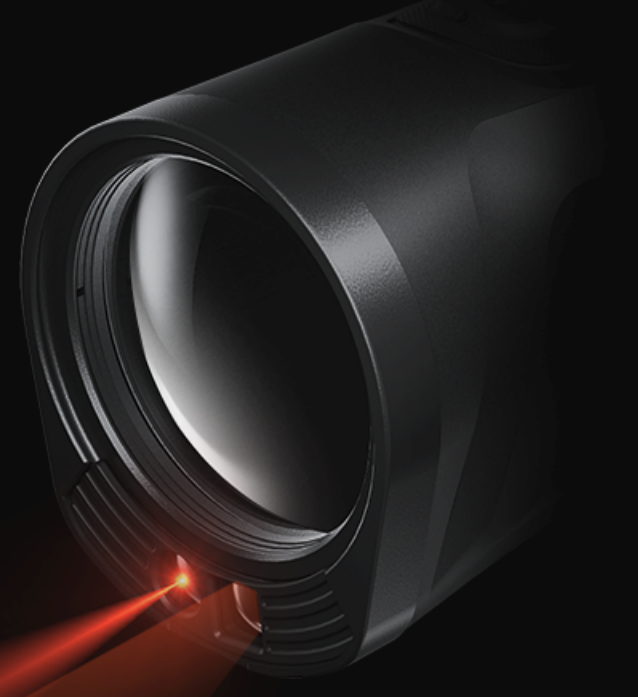


7Hx2

## Innovative LRF Integration

A streamlined LRF-integrated design enhances its structural integrity without compromising imaging performance, providing precise laser rangefinding up to 1000 meters.

1000m



## Thermal Super Resolution

Combining base magnification with continuous digital zoom up to 17.2x, powered by AI-driven Thermal Super Resolution, it delivers ultra-detailed images with premium quality.



## One-handed Operation Design

A lightweight and compact design features intuitive wheel focusing and fingernail-sized tactile buttons, enabling precise smooth handling and easy portability.



## Immersive Viewing Comfort

The new 0.5-inch AMOLED display with a resolution of 1600x1200 offers a vibrant viewing experience, revealing finer thermal details with improved contrast and depth.

↑0.5" AMOLED



## Enhanced Ergonomic Comfort

Rubber-coated construction ensures a comfortable grip and stable touch temperature, while the neck strap ensures easy carrying and ready access.



## Specifications

Model	Cyclops 335L 3.0
<b>Microbolometer</b>	
Resolution	384 x 288
Pixel pitch	12μm
NETD	15mK
Spectral range	8-14μm
Frame rate	50Hz
Detection range	1800m
<b>Optics</b>	
Objective lens	35mm/F0.8
Field of view	7.5° x 5.6°
m@100m	13.2m x 9.9m
Magnification	4.3X
Digital zoom	1-4X continuous zoom
Eye relief	20mm
Exit pupil	8mm
Diopter	±5D
<b>Display</b>	
Type	AMOLED
Resolution	1600x1200
Display size	0.5 inch
Color palette	6
Image mode	Forest/Target
<b>Function</b>	
Photo/Video playback	Yes
Language	Multiple-language
Inbuilt memory	64GB
Calibration	Auto/Manual
PIP	Yes
Hot tacking	Yes
OSD recording	Yes
<b>Battery</b>	
Battery	Repalceable and rechargeable Li-ion battery (18650x1)
Battery life	7H
<b>Interface</b>	
Type-C	Battery charge, Data transfer
Hotspot	Yes, App remote control
<b>Environment</b>	
Working temperature	-20°C—+50°C
Protection level	IP67
Weight, g	435±5
Dimension, mm	187(L)x56(W)x71(H)±5
<b>Accessories</b>	
External cable	USB Cable
Other accessories	Lens cloth, Charger, Battery and etc.
<b>Laser Rnagefinder</b>	
Safety class	Class 1
Wavelength	905nm
Range	1000m
Accuracy	±1m